

Design and Pattern in Decorated Papers: Wet and Dry Techniques

a traveling exhibit of the 1994 juried portfolio published by Hand Papermaking, Inc.

BACKGROUND... As part of its non-profit, educational mission, Hand Papermaking offers a biennial series of themed portfolios showcasing distinctive handmade papers. Visit <http://portfolios.handpapermaking.org> for a current listing, photos, and details. In partnership with The Robert C. Williams Paper Museum in Atlanta, traveling exhibits are offered, to share these exceptional papers with new audiences worldwide.

DECORATED PAPERS... Decorated paper is an historic craft enjoying renewed interest in the last few decades. It encompasses techniques such as marbling, paste paper, and pulp painting. Decoration can be inherent in the pulp of the sheet itself, or applied to the surface of the sheet. We call these wet and dry techniques. While decorated papers have been used for hundreds of years – by bookbinders, generally – they have also become a vibrant new medium for contemporary artists.

THE EXHIBIT... The exhibition includes 20 papers, each matted in an 11" x 14" black frame. A matching wall label accompanies each piece. Roughly 40-60 feet of wall space is required. Copies of the portfolio booklet are made available for visitors' reference in durable notebooks imprinted with the venue name, dates, and an acknowledgement of any exhibit underwriters. See the original portfolio prospectus (attached) for additional information including names of artists, jurors, and essayist.

PROMOTION... Each exhibition is promoted in *Hand Papermaking Newsletter* and on sites, blogs, and social media of Hand Papermaking and Robert C. Williams Paper Museum. A postcard can be designed and printed for an additional fee, and mailed to the venue area, using our lists and those of the exhibit site.

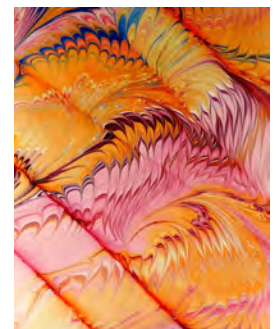
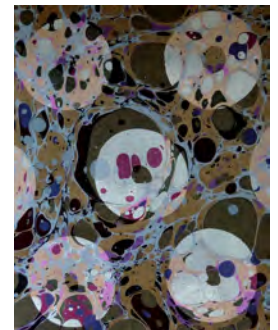
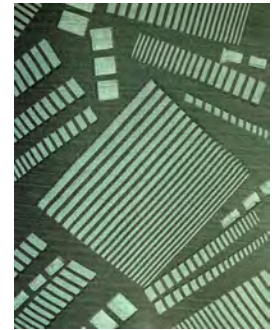
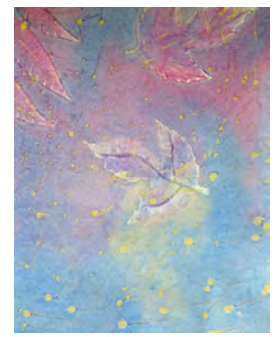
COST... The exhibition fee for approximately one month at one venue is \$800 plus insured shipping. The entire fee is due when specific dates are booked.

REQUIREMENTS... The exhibit space must be in a secure, indoor location, protected from extreme temperatures and direct sunlight. The venue must be insured against theft or damage, and assume all liability for visitors. The exhibit should be inspected thoroughly upon delivery, and inspected again when taken down and re-packaged, noting any imperfections on the form provided.

CONTACT... For questions about exhibiting *Design and Pattern in Decorated Papers: Wet and Dry Techniques* or any of our other traveling exhibits, please contact:

Tom Bannister, Hand Papermaking, Inc.
tom@handpapermaking.org
800-821-6604

Teri Williams, Robert C. Williams Paper Museum
teri.williams@ipst.gatech.edu
404-894-7840



Pictured top to bottom, details from
Bonham, Buchan/Ligorano, Draper, Fox, Franklund-Miller, Zmolek-Smith.
To view full images of all 20 works, visit <http://portfolios.handpapermaking.org>